



Smart Home Network Control System  
(Smart Assistant)  
Quick Install Manual



Version: V1.0

2017-08-10

# Disclaimer

HIOTH Technology Co., Ltd. owns the trademarks, product logos and commodity names of other companies appearing in this manual. The contents of this manual are subject to change due to product upgrades or other reasons. HIOTH Technology reserves the right to amend the contents of this manual without any notice or hint. This manual is only used as a guide, HIOTH Technology try best in this manual to provide accurate information, but HIOTH Technology Co. Ltd does not ensure that manual no mistakes, all statements, information and advice in this manual does not constitute any express or implied warranties.

In spite of its efforts to provide accurate information in this guide, HIOTH Technologies Limited is not responsible for the accuracy of the information contained in this manual. HIOTH Technology Limited may at any time, without notice, change the plans or products involved in this manual. Other vendors involved in this manual of the product or service is only in order to help the readers to understand the relevant circumstances, does not mean that HIOTH Technology approved and recommended these products or services, and the company development, sales of these products and services. The products and services described in this manual are limited to written software applications and limited warranty. These licenses and warranties will provide the customers with the right to purchase these products. Any content in this manual should not be regarded as expansion, change or change of HIOTH Technology Co. Ltd. provides any HIOTH Technology limited product warranty or license, will not create any new or additional warranty, or license.

The final explanation of this explanation belongs to HIOTH Technology Co. Ltd.

# 1. Packing List

Smart Assistant ×1  
User Manual ×1

## 2. Panel

➤ Front panel:



Fig2.1 The front panel schematic

### Indicator light:

1. In the host mode, the WAN port is connected through the physical port, when the assistant did not get IP address, The light slowly flashing
2. In the host mode, when WAN port is connected through WAN WIFI, and when the assistant did not get IP address, The indicator light fast flashing
3. In the satellite mode, You can connect to the assistant through WIFI or physical port. The satellite did not get IP address, The light slowly flashing
4. When the device got IP address, the indicator light always on.

### WAN (LAN) :

1. In the host mode, it is a WAN port when use this port to connect to Home router
2. In the satellite mode, The network port is a LAN port and can be connected to the assistant via WIFI or physical port

### Reset button:

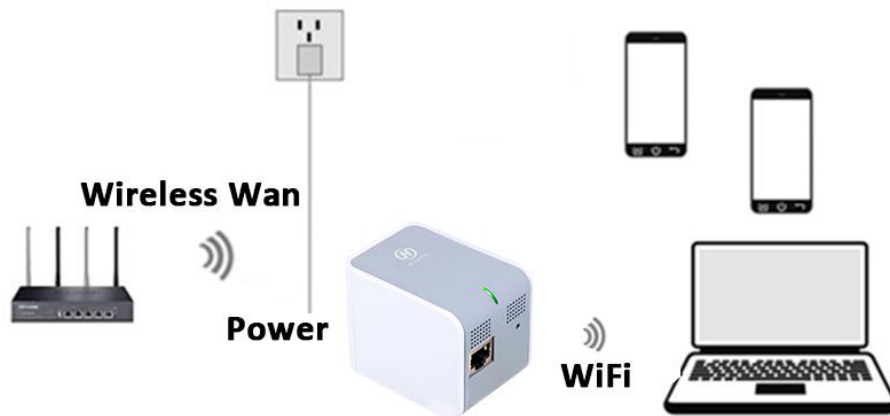
1. Enter EasyConfig mode: long press 2s ~ 5s, then release
2. Remove WAN WIFI configuration: long press 5s ~ 10s, then release
3. Reset APP password: long press 10s ~ 20s, then release
4. Restore factory setting: long press > 25s, then release

## 3. Installation

Before system configuration, please follow the steps below for proper hardware connection. To ensure the wireless network performance of the control system, place the Smart assistant in the middle of the coverage area.

### Topology 1.

- 1 Create a LAN connection**  
Connects the LAN port of the Smart assistant (WAN and LAN) to the computer network
- 2 Establish wan connection**  
Connect the Smart assistant (WAN wifi) to the router wifi SSID through wifi
- 3 Connect the power supply**  
Connect the power supply, and the Smart assistant starts on its own



Topology 2.

- 1 Create a LAN connection**  
Connects a computer to Smart assistant through WiFi
- 2 Establish wan connection**  
Using a network wire, the Smart assistant (WAN and LAN) is connected to the router Ethernet LAN
- 3 Connect the power supply**  
Connect the power supply, and the Smart assistant starts on its own

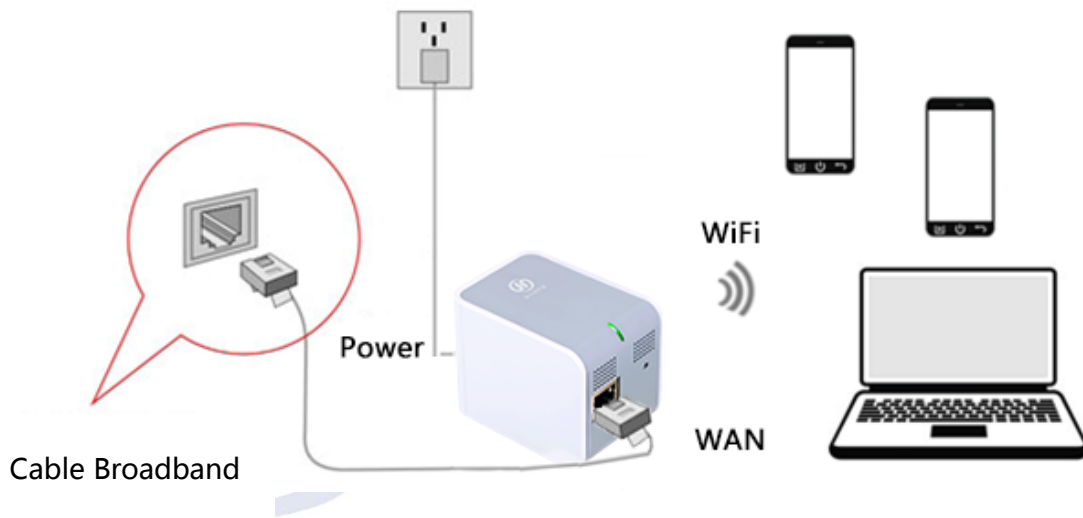
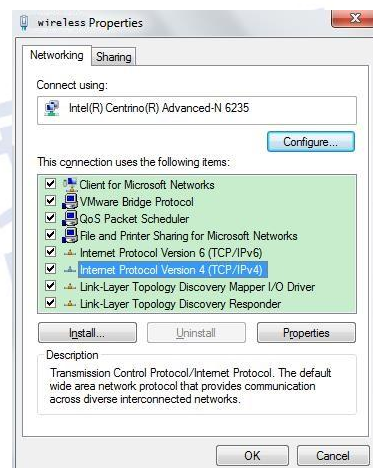
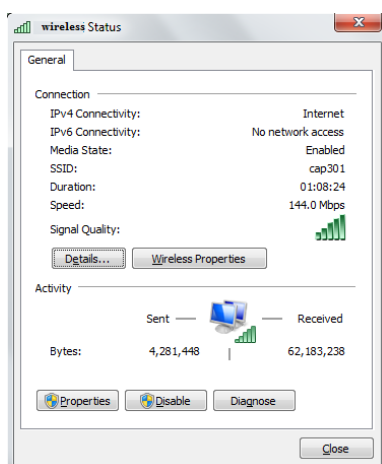


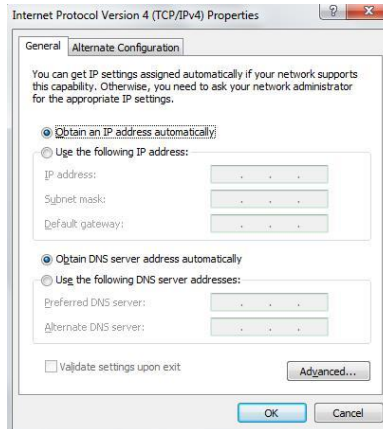
Fig3.1 LAN and Wan connections

## 4. Setting up Your Computer Network

1. On the lower-right corner of the desktop, right-click the Network icon and select **Open Network and Sharing Center**. In the pop-up window, select Local Area Connection and click **Properties**.
2. In the pop-up dialog box, select **Internet Protocol Version 4 (TCP/IPv4)** and double-click it.



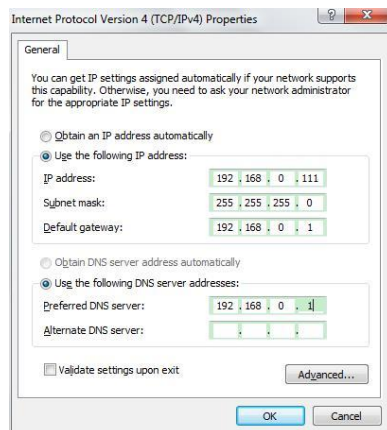
3. In the appeared window, select obtain an IP address automatically or Use the following IP address.
  - a. **Obtain an IP address automatically**



b. **Use the following IP address** (Make sure your computer is under the same LAN subnet with the Smart assistant. The Smart assistant automatically assigns an IP address 192.168.168.1. Change will be applied with additional notice.)

- ✧ **IP Address:** 192.168.168.XXX (XXX ranges from 2 to 254)
- ✧ **Subnet Mask:** 255.255.255.0
- ✧ **Gateway:** 192.168.168.1
- ✧ **DNS Server:** Type a local DNS server address (contact your ISP provider or details), or use the Smart assistant as the proxy server (192.168.168.1).

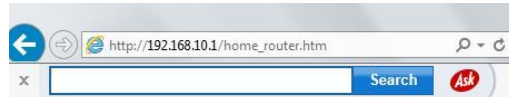
After completing the settings, click **OK**. Go back to the dialog box in step 2 and click **OK** to save the settings.



## 5. Logging in the Smart assistant

### 1. Open the Web browser

Open the Web browser, type **http://192.168.168.1** and press **Enter**.



### 2. Enter validation information

In the pop-up window, type the user name **admin** and the password **caphomey**, and then click ok.



### 3. Login Smart assistant interface

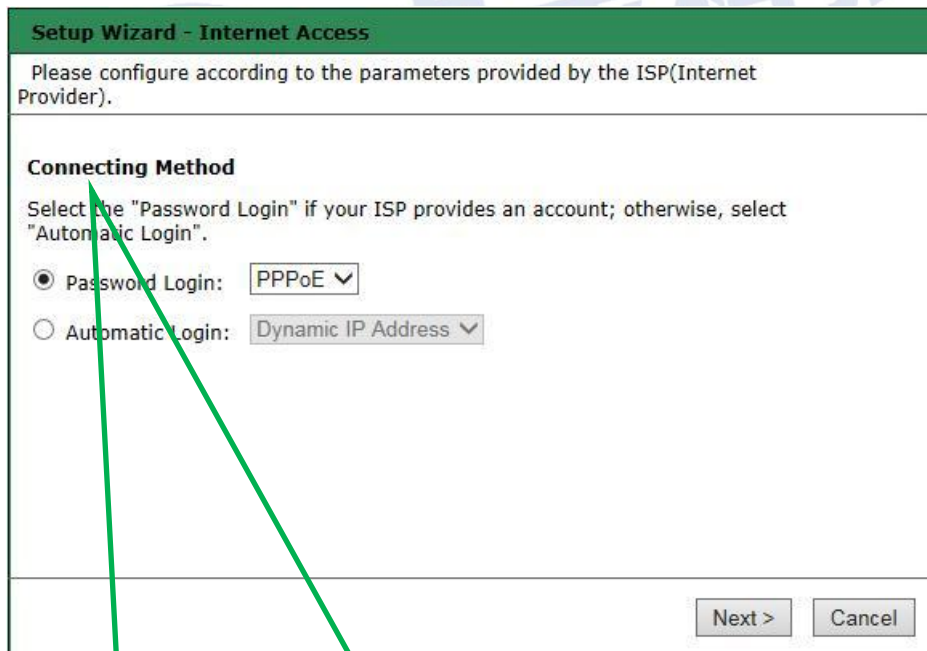
With the valid username and password, you can access the Smart assistant main page under administrator mode.

## CAP-HOMEY Smart Home

- Guide	System Status
Setup Wizard	
Device Mode	
Language	
- Config	WAN
System Status	Connecting Method: PPPoE
LAN Config	Connection Status: Active
Device List	IP Address: 117.81.127.76
NTP Config	MAC Address: 18:38:22:45:1b:11
DDNS Config	
Port Forward	LAN
sPort Forward	IP Address: 192.168.10.1
Log Record	Subnet Mask: 255.255.255.0
	DHCP Server: On
	MAC Address: 18:38:22:45:1B:10
- Wireless	System
Status	Device Name: Smart_Home_Control
Basic Config	System Version: v1.01T01_64
Encryption	Current Time: 2016-06-13 09:39:21
+ System	Module Type: EO,FB
Log Out	Refresh

#### 4. The installation wizard

As shown below, the Smart assistant supports 3 common types of IP Configuration (PPPoE, Dynamic IP and Static IP). Please select one as desired.



How to judge what Internet connection?

Opened a network operators to provide parameters online	Outgoing Connection Settings
user name and password	PPPoE
Fixed IP address, subnet mask, gateway and DSA	Static IP
Without any parameters, the computer does not need to do any setting	Dynamic IP



## 5. Basic Settings

### CAP-HOMEY Smart Home

- Guide	<b>Wireless</b>	
Setup Wizard	Area:	China
Device Mode	SSID:	cap301
Language	Access Label:	cap301
- Config	Enable SSID:	<input checked="" type="checkbox"/>
System Status	Broadcasting SSID:	<input checked="" type="checkbox"/>
LAN Config	User Isolation:	<input type="checkbox"/> (Within the Same SSID)
Device List	Current Encryption:	WPA2-PSK
NTP Config	802.11 Mode:	802.11B/G/N
DDNS Config	Channel:	03
Port Forward	Bandwidth:	20MHZ/40MHZ
sPort Forward	Channel Extended:	Upward Expansion
Log Record	WMM Support:	<input checked="" type="checkbox"/>
- Wireless	WPS Configuration:	<input checked="" type="checkbox"/> Enable WPS
Status	AP PIN Code:	15833198 <input type="button" value="Generate"/>
Basic Config	AP PIN Code Access:	12345670 <input type="button" value="Access"/>
Encryption	WPS Status:	Idle
+ System	<input type="button" value="Cancel"/> <input type="button" value="Refresh"/> <input type="button" value="Apply"/>	
Log Out		

- ✧ **Area:** Select your current area.
- ✧ **Primary SSID:** Service Set Identifier, a unique name that identifies a particular wireless network. It is a required field that can be modified.
- ✧ **Secondary SSID:** The secondary Service Set Identifier. It is an optional field that can be modified.
- ✧ **Whether Enable:** Tick to enable wireless connection. Un-tick if you want to disable the wireless connection functions.
- ✧ **Whether Broadcasting:** The function is enabled by default. Select **Turn Off** to disallow the Smart assistant to broadcast SSID. In this way, the wireless clients must know the Smart assistant's SSID in order to connect to the Smart assistant.
- ✧ **User Isolation with the same SSID:** Enable this function to strengthen wireless network security. To apply communication isolation between all the wireless clients on the AP, please enable this function for the clients of the same or different SSIDs.

**User Isolation within the same SSID:** If enabled, the wireless clients of the same SSID cannot connect to each other.

For example, if you set the primary and secondary SSID as AP1 and AP2 respectively and enable the user isolation function, with PC1 and PC2 being on the same network segment and connecting to AP1 via wireless network card, PC1 and PC2 cannot connect to each other. However, they can connect to the wireless clients on AP2. This function is for the isolation between the wireless clients of the same SSID.

**User Isolation between different SSIDs:** If enabled, the wireless clients of primary SSID cannot connect to the clients of secondary SSID.

For example, if you set the primary and secondary SSID as AP1 and AP2 respectively and enable the user isolation function, with PC1 connecting to AP1 via wireless network card and PC2 connecting to AP2, PC1 and PC2 cannot connect to

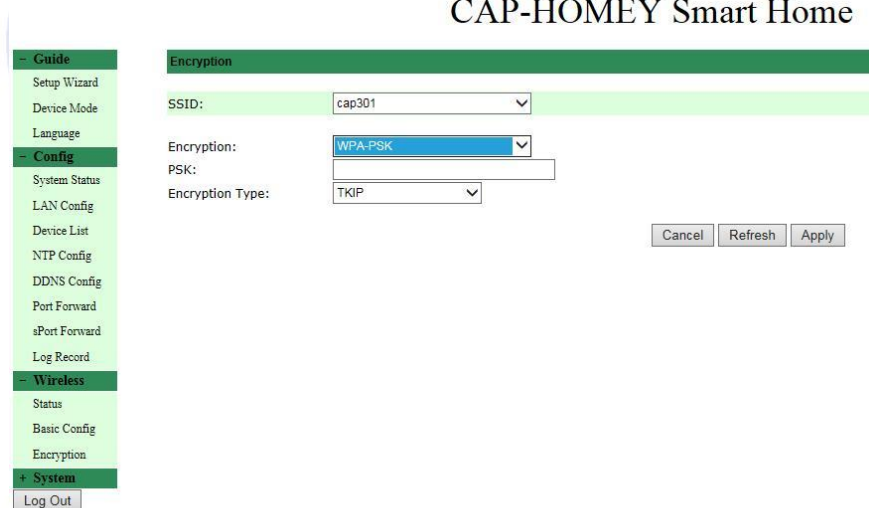
each other. This function is for the isolation between the wireless clients of different SSIDs.

- ✧ **802.11 Mode:** Select a mode according to the type of wireless client.
  - Turn Off:** Disable all of the wireless connection functions.
  - 11b Mode:** Select this mode if there is only 11b mode client existing in your wireless network.
  - 11g Mode:** Select this mode if there is only 11g mode client existing in your wireless network.
  - 11b/g/n Mixed Mode:** Select this mode if there are 11b, 11g and 11n clients existing in your wireless network.
- ✧ **Channel:** The channel used by the Smart assistant. Use the drop-down list to select other valid channel ranging from 1 to 13.
- ✧ **Channel Bandwidth:** Set up the bandwidth to improve wireless performance. When there are 11b/g and 11n clients in the wireless network, select 802.11n mode (wide) with 40M bandwidth; when there is only 11n client absent in the wireless network, select 20M bandwidth. If the wireless network is in 11n mode, select 20/40M bandwidth to facilitate the transmission.
- Channel Extended:** Set up the operation frequency of the wireless network under 11n mode.

## Wireless Connection Security

WPA2 (Wi-Fi Protected Access version 2) provides higher security than Wireless Equivalent Privacy (WEP) or Wi-Fi Protected Access (WPA).

### CAP-HOMEY Smart Home



The screenshot shows the 'Encryption' configuration page in the CAP-HOMEY Smart Home interface. The left sidebar menu includes sections for 'Guide', 'Config', 'Wireless', and 'System'. The 'Wireless' section is expanded, showing 'Status', 'Basic Config', and 'Encryption'. The 'Encryption' page has a green header and contains the following fields:

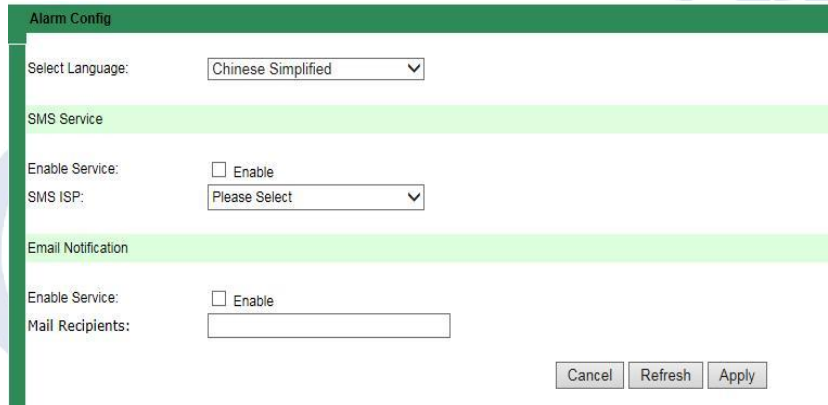
- SSID:** cap301
- Encryption:** WPA-PSK
- PSK:** (empty text input field)
- Encryption Type:** TKIP

Buttons for 'Cancel', 'Refresh', and 'Apply' are located at the bottom right of the form.

- ✧ **Encryption Mode:** Select a correspondent encryption mode for the SSID. Here you select **WPA2-PSK**.
- ✧ **PSK:** Type a string of 8 to 63 characters in ASCII format or 64 hexadecimal characters for data encryption.
- ✧ **WPA Encryption Type:** Select AES (Advanced Encryption Standard) or TKIP (Temporal Key Integrity Protocol) mode.

## 6. SMS Configuration

As the Smart assistant is designed for the control of smart home App, the text Message function can alert the user to an emergency, such as the detection of unidentified visitor.



**NOTE:** Text message ISP includes DIYI Information, SMS Country, SMS King, Easygo, Mitake and Smse. User can select one of the ISPs and type his/her username, password and mobile phone number.

## 6. FAQ

This section lists some common questions of Smart assistant operation and correspondent solutions. If you cannot find feasible solutions for the problems you encounter, please visit our Website <http://www.hioth.com/>. We will provide assistance as soon as possible.

### 1. Why can't I access the Smart assistant main page after entering the IP address on a browser?

- 1) Please check if your Smart assistant is properly operated. The PWR LED should show constant green after the Smart assistant is turned on. If not, the Smart assistant might be broken. Please contact us for repair.
- 2) Please check if the Smart assistant is successfully connected to the Internet and if the correspondent LED is on. Under certain situation, the network connection may fail even if the LED is on.
- 3) Please Ping the IP address 192.168.168.1 of the Smart assistant in the LAN. If you can access the IP address, check if your browser is connecting to the Internet through a proxy server. If yes, please disable the function. If you fail to access the IP address, please press and hold the RESET button to restore the Smart assistant to factory default settings, and then ping the IP address 192.168.168.1 again.

If the above solutions could not work, please contact us for further support.

**2. What should I do if I forget the logging password for accessing the main page of Smart assistant?**

Please restore the Smart assistant to factory default settings by pressing and holding the RESET button for at least 25 seconds. After you release the button, the system will automatically restart and restore its default settings.

**3. What should I do if the PC connected with the Smart assistant encounters IP address conflict after start-up?**

Please turn off other DHCP servers in the LAN if any. The default IP address of Smart assistant is 192.168.168.1. Please make sure the IP address is not used by other PCs or devices in the LAN. Change the IP address of other devices that use the same IP with the Smart assistant. If there are two PCs using a same IP address, change the IP address for one of them.

**4. How to connect the Smart assistant to the Internet with a dynamic IP address?**

To enable the connection, on the main page of Smart assistant, find **Quick Configuration**, select **Dynamic IP Connection** and click **Save**. Some ISPs would register the MAC address of client's network card. In this case, you need to set the MAC address of the Smart assistant in the WAN as the registered MAC address.

**5. How to allow the users on the Internet to access my PC through the Smart assistant?**

To allow the users on the Internet to access the servers in your LAN, including mail server, WEB and FTP, you have to establish a Virtual Server. Follow the steps to configure the Smart assistant.

- 1) Establish a server in your LAN and make sure it can be accessed by other users in the LAN. Meanwhile, you need to know the port numbers of the servers, such as Port 80 for WEB server, Port 25 for SMTP and Port 110 for POPS mail server.
- 2) On the main page of Smart assistant, select **Port Forwarding**.
- 3) Type the service ports in the LAN and WAN, such as **80** for the Start Port and the End Port.
- 4) Type the IP address of the server in the LAN. If the IP address of your WEB server is 192.168.168.1, type **192.168.168.1**.
- 5) Confirm the protocols used by the servers, such as TCP, UDP or ICMP. If you are not sure about the protocol, select **Both**.
- 6) Click **Enable** to save and activate the settings.

## 7. Technical specifications

<b>Power Supply</b>	AC 100~240V/ 50~60Hz
<b>Dimension</b>	7*5*5.5mm(L×W×H)
<b>Operational Environment</b>	Temperature range: -20°C to 70°C (-4°F to 158°F) Operating humidity: 10%~90% RH No condensation
<b>Accessories</b>	<ul style="list-style-type: none"> <li>➤ Smart assistant</li> <li>➤ Quick start guide</li> </ul>
<b>Technical Support</b>	<ul style="list-style-type: none"> <li>➤ Support the wireless AP, routers, and one switch</li> <li>➤ Standard benchmark 802.11n standard, 300Mbps and 802.11b ieee 802.11g</li> <li>➤ Support wifi, zigbee, enocean, z-wave and other wireless protocol smart home management</li> <li>➤ Support android, iOS app and domain network management</li> <li>➤ Support NAT traversing, remote support lighting equipment</li> <li>➤ Support SMS warning and email alert function</li> <li>➤ Supports 64/128 bit wep data encryption, wpa, wpa2 and other encryption and security mechanisms</li> <li>➤ Provide a 1/100 m 10 m and a Ethernet (wan) interface with a wan connection</li> <li>➤ Support NTP,DDNS</li> <li>➤ Can control all the smart devices in Cap-homey's SmartHome System</li> <li>➤ Support PPPoE, DHCP and Static IP</li> <li>➤ Support usb storage</li> </ul>

## 8. Announcements

---

### Security

- Only use the attachments/accessories specified by the manufacturer.
- Only use the power adapter provided in the package.
- Do not expose the product to dew or splashing water environment.
- Do not put any hazards on this product.
- As far as possible away from the heating device.



### Warning

- Please do not hurt our products shell
- Please do not arbitrarily change the configuration of this product
- Please do not casually plug the power adapter